



September 2023



Newsletter



ONGOING PROJECTS

ENTERPRISE PARKS & RECREATION

We are excited to see the progress at the new Recreation and Aquatics building. Pictured is the trusses (framework) installation for the new 4 court gym at our new Recreation and Aquatics building.

Below is a list of all of our future and current projects. Follow along with us on [Facebook](#) and [Instagram](#) to stay up to date.

- New Recreation and Aquatics Building
- Multi-Sports fields
- New Pickleball Courts
- Ouida Street Park improvements
- Donaldson Park Tennis Courts - practice area
- Westside Park improvements
- Johnny Henderson Family Park improvements

In this Issue

- Ongoing Projects
- World Series Winners recognition
- Volleyball & Football Game Days
- Cheer Clinic days
- Ongoing Activities
- Spooky in the Park
- Meet the Team

RECOGNIZED

11U WORLD SERIES WINNERS

The Enterprise Parks and Recreation 11U All Star Baseball team went undefeated in region, state and world series play, where they scored 191 runs and only allowed 26. They were recognized by the City of Enterprise Mayor and Council on Tuesday, August 15th.



VOLLEYBALL

GAME DATES

Games start September 11th!

[View Calendar](#)

FOOTBALL

GAME DATES

Tackle games start September 9th!

[View Schedule](#)

Flag Football games start September 11th!

[View Calendar](#)



CHEER CLINIC REMINDER

PARTICIPANT INFO

CHEER CLINIC

Date: Saturday, September 31st

Time: (ages 3-5) 8:30 am
(ages 6-10) 10 am

Location: Enterprise Civic Center
2401 Neil Metcalf Rd, Enterprise, AL

Please arrive at least 15 minutes early for attendance and armbands. Parents/guardians may drop off registrants and come back for pick up. Any parents/guardians that would like to stay, will be allowed to sit in the chairs up against the wall in the auditorium. Parents/guardians are required to sign their participating child(ren) in and out.

What to wear and bring:

- T-shirt
- Flexible shorts/skort (jeans are not allowed)
- Hair tied up
- Tennis Shoes
- Poms (with registrants' name on ribbon)
- Water (with registrants' name)

Game Day is Oct 5th, more details can be

found here: https://rec.enterpriseal.gov/athletics/youth_sports/cheerleading.php

REGISTRATION HAS CLOSED



*T-shirts & poms
available for pick up!*



SPOOKY IN THE PARK

OCTOBER 27TH

We are bringing our annual Spooky event back to Johnny Henderson Park this year! This year the event will be held on Friday, October 27th from 5PM - 8PM at Johnny Henderson Family Park.

Follow us on [Facebook](#) and [Instagram](#) for more details to come! Vendor Opportunities Available, visit rec.enterpriseal.gov or email khooper@enterpriseal.gov.

SENIOR AEROBICS

SENIOR AEROBICS

Whether you are looking for a fun day out of your home, or a way to stay in shape, this is a class for you! Designed for seniors of all ages, these classes are FREE and open to the public.

September Schedule:

5th - 9am at Enterprise Civic Center

7th - 9am at Enterprise Civic Center

12th - 10am at Enterprise Civic Center

14th - 9am at Enterprise Farmers Market

19th - 9am at Enterprise Civic Center

21st - 9am at Enterprise Civic Center

26th - Cancelled

28th - 9am at Enterprise Farmers Market



PICKLEBALL

SCHEDULE

Pickleball is the fastest growing recreational sport for ALL ages. Currently, courts are located at Donaldson Park. New pickleball courts are in the near future at the old tennis courts at ESCC!



FISHING DAYS

Every third Saturday of the month enjoy public fishing at Johnny Henderson Family Park. Seniors (55 & older) can fish every 1st and 3rd Friday of the month.

Find out more

[HERE](#)



MEET THE TEAM

JEFF GOSSEN

Having been with the City of Enterprise Parks and Recreation department for over 19 years, Jeff is reliable, hard working, and he takes pride in his work.

Jeff enjoys the different events put on by EPRD, and he enjoys working outside. We are thankful to have Jeff on our team! If you see him out on the ball fields, be sure to stop by and tell him thank you for all that he does for EPRD!

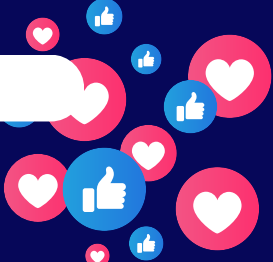


A dark blue banner containing social media information. On the left is a Facebook profile card for 'Enterprise Parks and Recreation' showing a building and the department logo. On the right are two social media handles: '@enterprise_parksandrecreation' for Facebook and '@enterprise_parksandrec' for Instagram, accompanied by a cluster of colorful heart and like icons.

STAY UPDATED

 @enterprise_parksandrecreation

 @enterprise_parksandrec



THIS NEWSLETTER IS SPONSORED BY:

